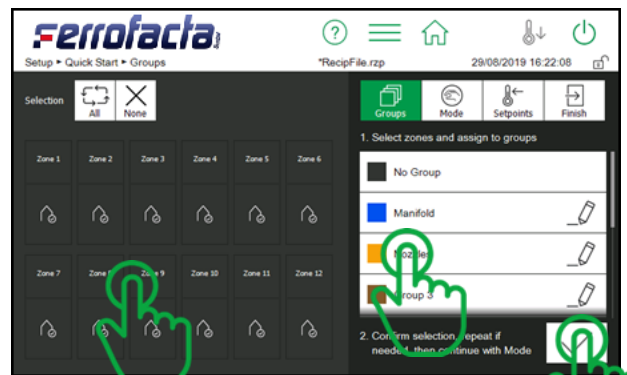
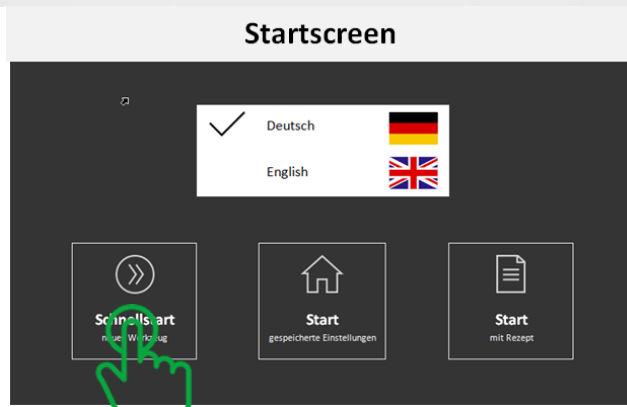
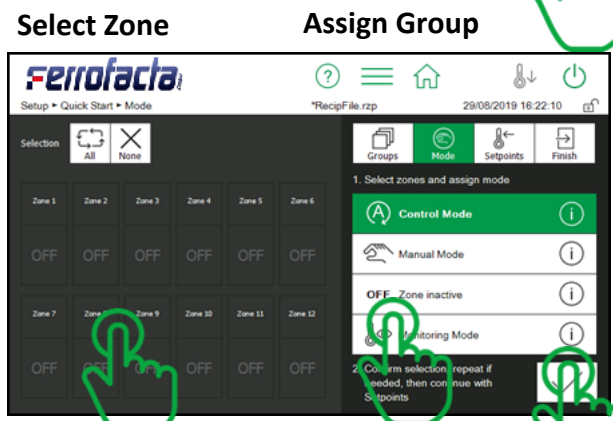
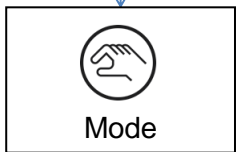


Quick Start  
new mold

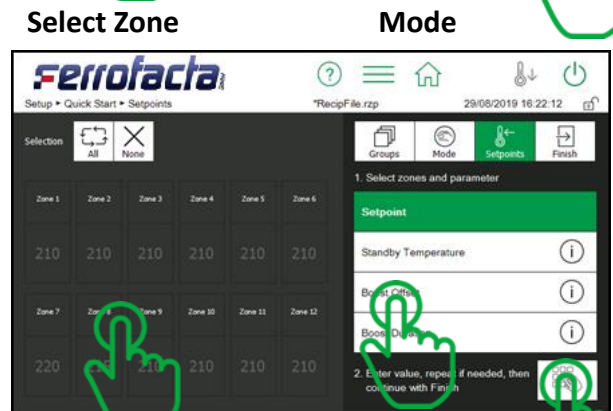
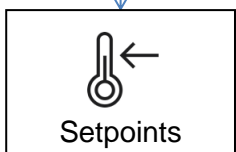


By default, all passwords are set to 22.



Confirm

- Betriebsarten:**
- Control Mode
  - Manual Mode
  - Zone Inactive
  - Monitoring Mode



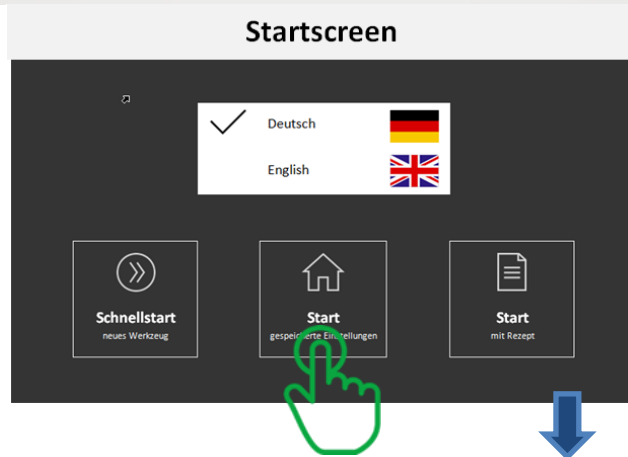
Confirm

- Sollwerte:**
- Setpoint
  - Standby Temperature
  - Boost Offset
  - Boost Duration



Select Zone      Parameter

Enter Value



Start with saved settings

Help    Menu    **Main view**    Alarm    Standby    Ausgänge EIN / AUS

	Zone 1	Zone 2	Zone 3	Zone 4	Zone 5	Zone 6	Zone 7	Zone 8	Zone 9	Zone 10	Zone 11	Zone 12
Act [°C]	210	210	210	210	210	210	45	243	211	210	210	210
Set [°C]	210	210	210	210	210	210	50	235	210	210	240	210
ΔT [°C]	15	15	15	15	15	15	15	15	15	15	15	15

#### Setpoint, Output Level, Boost, Mode

Operation • Setpoint / Output Level    \*RecipFile.rzp    29/08/2019 16:16:58

Selection: All, None

Boundaries: 0 ... 600 °C

215

7	8	9	C
4	5	6	Δ
1	2	3	∇
+/-	0	.	OK

#### Diagnostics including Troubleshooting

Operation • Diagnostics • Faults    \*RecipFile.rzp    29/08/2019 16:10:24

Current Faults    Zones

- Broken sensor    4
- Negative temperature deviation    1-3, 5-12

1. Select fault

**Alarm: Broken sensor**

No sensor detected for the zone

2. Open Troubleshooting